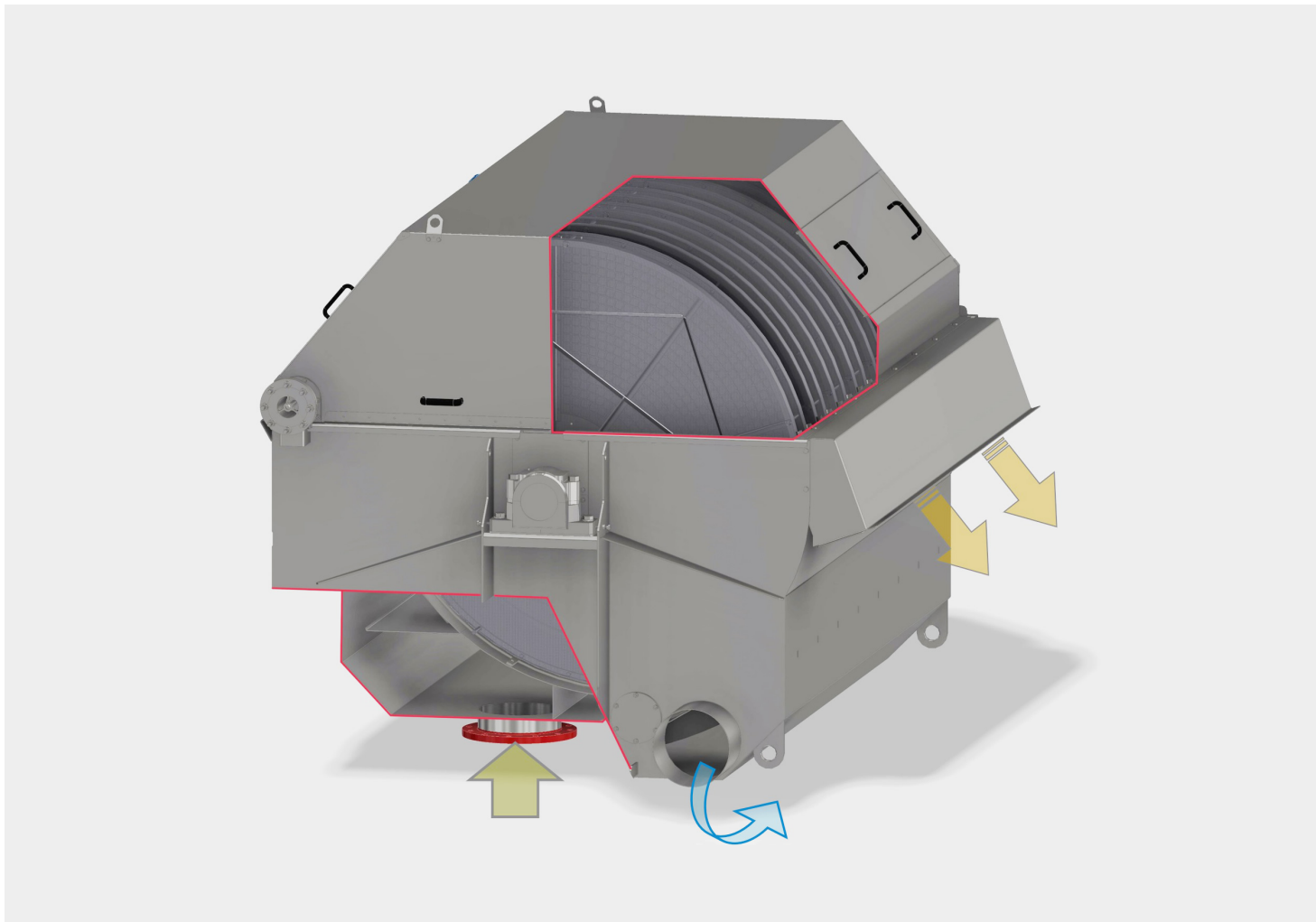


# Elephant ET – Disc Thickener/ Filter

Multifunctional Disc Thickener



# Elephant ET – Disc Thickener/ Filter

Multifunctional Disc Thickener

## Technology

The Elephant Thickener / Filter consists of rotating disc pairs mounted on a shaft. Each disc is sealed against the machine vat by a highly resistant, long-life rubber sealing to ensure effective separation between feed and filtrate chamber. The feed suspension passes through the inlet chamber on the backside of the machine and distributes equally to all disc pairs. The water passes through the filter fabric mounted on the disc due to level difference between the feed and the filtrate side of it. The thickened solids are discharged on the frontside of the machine by the movement of the rotating discs. Backwash showers continuously clean the filter fabric. The filter fabrics are multilayer halve screen elements with mesh sizes of 100 to 800 µm. The filtrate water passing through the filter fabric is collected in a filtrate chamber and discharged from there through filtrate flanges. The water level in the machine vat is measured by a level transmitter and maintained by a level control valve in the filtrate pipe and by adaption of the rotation speed of the discs.

## Features

- Completely enclosed machine design for clean and safe operation
- Effective filter fabric cleaning system
- Optional shower water protection system with cleaning brush and brush drive for backwashing with clarified water
- Feed flow and solids variation have only little effect on the discharge consistency of the solids and of the filtrate quality
- Multi-layer filter fabric technology for extended lifetime
- Several mesh sizes and wire technology available, depending on application

## Why to buy

- Stable operation characteristics by advanced water level control
- Low OPEX by long life multilayer screens & disc sealing
- Easy operation
- Simple installation, no vacuum / drop-leg required
- Can be operated with and without flocculent addition
- Automatic Shower Water Protection System allows filter fabric cleaning with clarified/ filtered process water



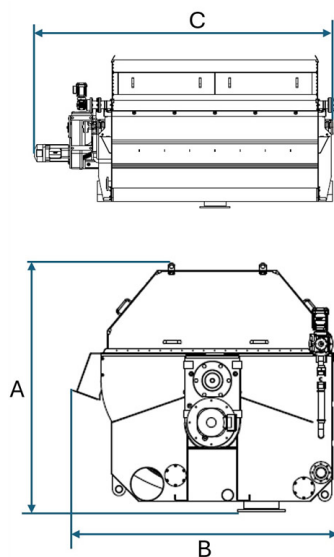
## Typical & Proven Process Applications

- Liquid-solid separation for homogeneous and non-homogeneous suspensions
- Fiber recovery through thickening of suspensions as broke, stock and others
- Pre-Treatment of mill effluents and process flows loaded with heavy solids
- Soft washing & thickening in one machine by removal of fines and fillers
- Process Water Cleaning in Plastic Recycling (cold loop & hot loop)

## See as well the following Products

- BlueDrain BDL – Belt Thickener
- COMPAX CFX-F 50,60 & 80
- MINIPRESS MPX 30, 40 & 50
- RSP- Sludge and Fiber Residual Screw Press RSP 650, 800 & 1150
- MSC- Spiral conveyors and related bunker- & container filling- & distribution systems

## Specifications



	A x B	C									
		-01	-02	-03	-04	-05	-06	-07	-08	-09	-10
ET 10	1275 x 1400	1015	1360	X	X	X	X	X	X	X	X
ET 16	1920 x 2220	X	1790	2150	2640	3070	3430	3840	4215	4565	4970
ET 20	2270 x 2440	X	1940	2230	2705	3245	3560	4040	4440	X	X

**Meri Environmental Solutions GmbH**

Bodenseestr. 113  
81243 Munich, Germany  
Tel. +49 89 59 33 44  
info@meri.de

**Voith Meri Environmental Solutions, Inc.**

2620 E. Glendale Avenue  
P.O. Box 1262  
Appleton WI 54911-1262, USA  
Tel. +1 920 734-8485  
info@meriusa.com

**Meri Sistemas e Tecnologia Ltda.**

R. Friedrich von Voith, 825  
São Paulo – SP – 02995-000, Brasil  
Tel. +55 11 3944-6644  
meribrasil@meribrasil.com.br

**Meri Environmental Technology  
(Kunshan) Co.,Ltd.**

Room 203, No.5, Qinghua Tuspark  
Zuchongzhi Road 1666  
Kunshan, Jiangsu PRC, China  
Tel. +86 51 28 68 90 834  
info@meri.cn

[www.meri.de](http://www.meri.de)



**Note:** All product-related data and information in this publication shall serve for information purposes only. They shall not be interpreted or intended to represent any kind of warranty or guarantee. The only legally binding statements are those contained solely within our quotations. Errors and omissions excepted. Technical data are subject to change.